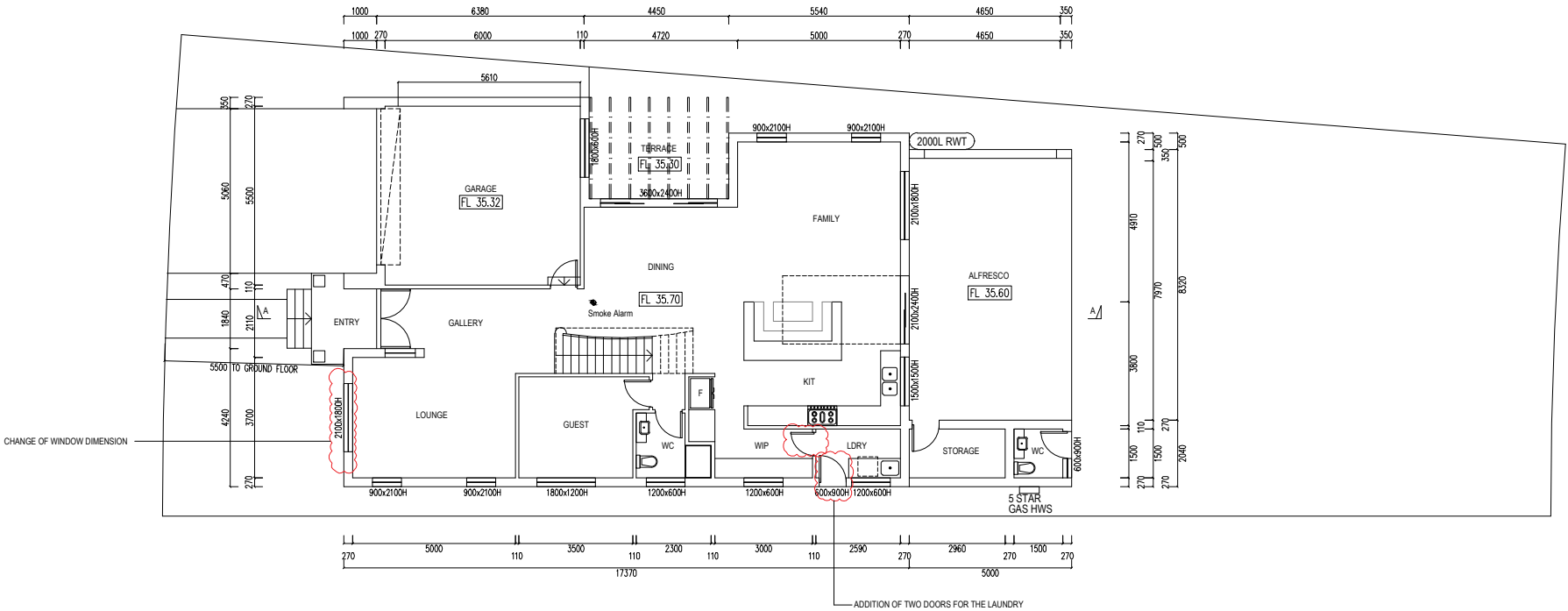
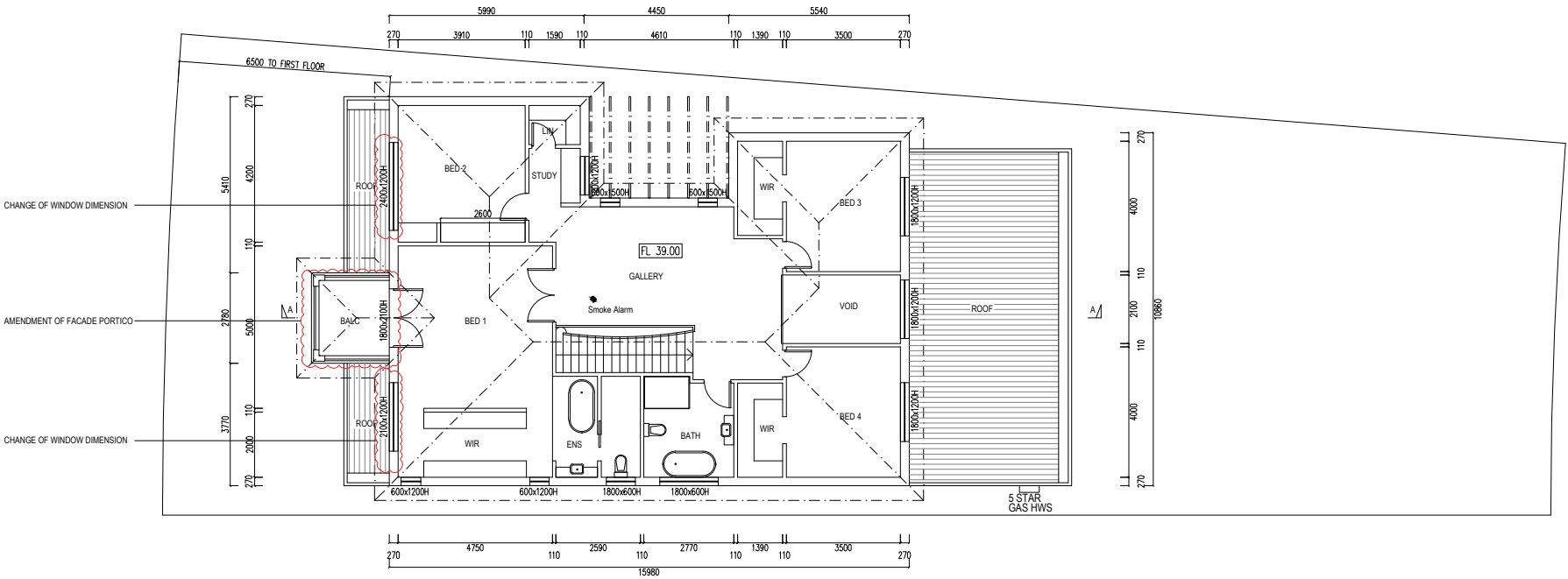


BCA Volume 2 – Compliance:



- Part 3.1 Site Preparation
Part 3.1.1 Earthworks
Part 3.1.2 Earth retaining structures
Part 3.1.3 Drainage
Part 3.1.4 Termite risk management
Part 3.2 Footings and Slabs
Part 3.2.2 Preparation
Part 3.2.3 Concrete and reinforcing
Part 3.2.4 Site classification
Part 3.2.5 Footing and slab construction
Part 3.3 Masonry
Part 3.3.1 Unreinforced masonry
Part 3.3.2 Reinforced masonry
Part 3.3.3 Masonry accessories
Part 3.3.4 Weatherproofing of masonry
Part 3.3.5 Masonry veneer
Part 3.3.6 Isolated masonry piers
Part 3.4 Framing
Part 3.4.1 Subfloor ventilation
Part 3.4.2 Steel framing
Part 3.4.3 Timber framing
Part 3.4.4 Structural steel members
Part 3.5 Roof cladding, gutters and downpipes and wall cladding
Part 3.5.1 Sheet roofing
Part 3.5.2 Roof tiles and shingles
Part 3.5.3 Gutters and downpipes
Part 3.5.4 Timber and composite wall cladding
Part 3.5.5 Metal wall cladding
Part 3.6 Glazing
Part 3.7 Fire Safety
Part 3.7.1 Fire properties for materials and construction
Part 3.7.2 Fire separation of external walls
Part 3.7.3 Fire protection of separating walls and floors
Part 3.7.4 Fire separation of garage top dwellings
Part 3.7.5 Smoke alarms and evacuation lighting
Part 3.8 Health and Amenity
Part 3.8.1 Wet areas and external waterproofing
Part 3.8.2 Room heights
Part 3.8.3 Facilities
Part 3.8.4 Light
Part 3.8.5 Ventilation
Part 3.8.6 Sound insulation
Part 3.8.7 Condensation management
Part 3.9 Safe Movement and Access
Part 3.9.1 Stairway and ramp construction
Part 3.9.2 Barriers and handrails



GROUND FLOOR PLAN



FIRST FLOOR PLAN

			GENERAL NOTES: -This drawing is copyright of GEC Design -All work is to be in accordance with the NCC (formerly BCA), relevant SAA Codes, Conditions of Council and other relevant Authorities requirements. -DO NOT scale drawings and always refer to dimensions. -Check all dimensions on site before commencing work. -Always refer all discrepancies and enquiries to the Designer			Gec Désign BUILDING DESIGNERS CIVIL & STRUCTURAL ENGINEERS NATHERS & BASIX ASSESSORS Unit 2A, 148-150 Canterbury Rd Bankstown NSW 2200 P: 02 9790 1600 E: info@gec.net.au F: 02 9790 1622 W: www.gec.net.au	CLIENT: EAMAN ARJA & MOHAMAD ELARJA	DRAWN: A.NAKEEB	SCALE: 1:200 @ A3 1:100 @ A1
B	AMENDED FRONT FACADE WINDOWS SIZES AND ADDED LAUNDRY DOOR	28.07.23					PROJECT: 2 STOREY DWELLING	APPROVED: A.WEHBHE	JOB NO: 22009
A	AMENDED AS PER LETTER DATED 20.06.22	21.06.22					ADDRESS: 11 WENKE CRES YAGOONA	DATE: 04.02.22	SHEET: DA02
REV	AMENDMENT	DATE					TITLE: ARCHITECTURAL PLANS		